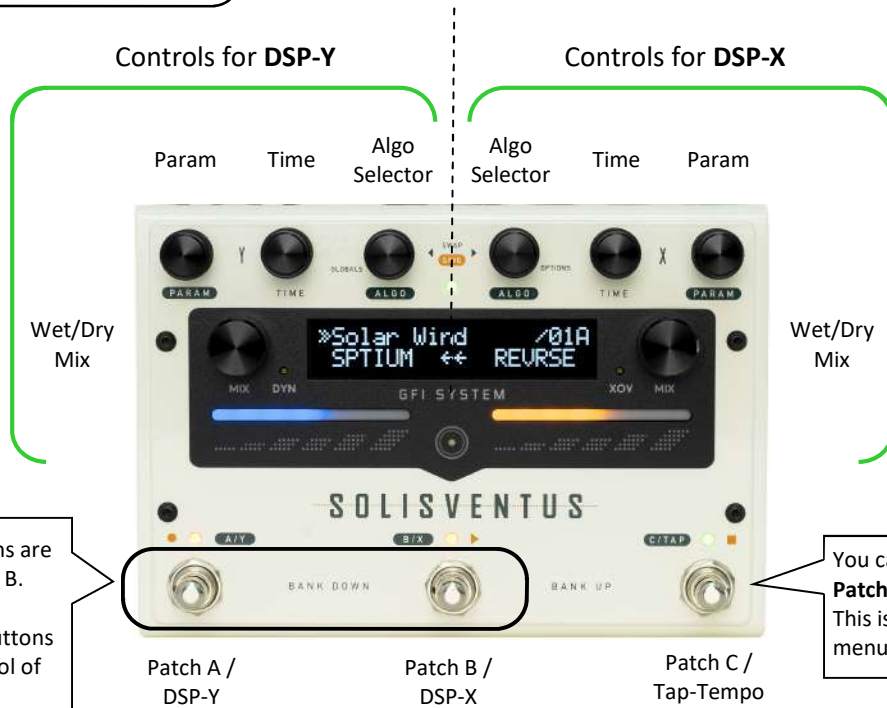


Controls overview

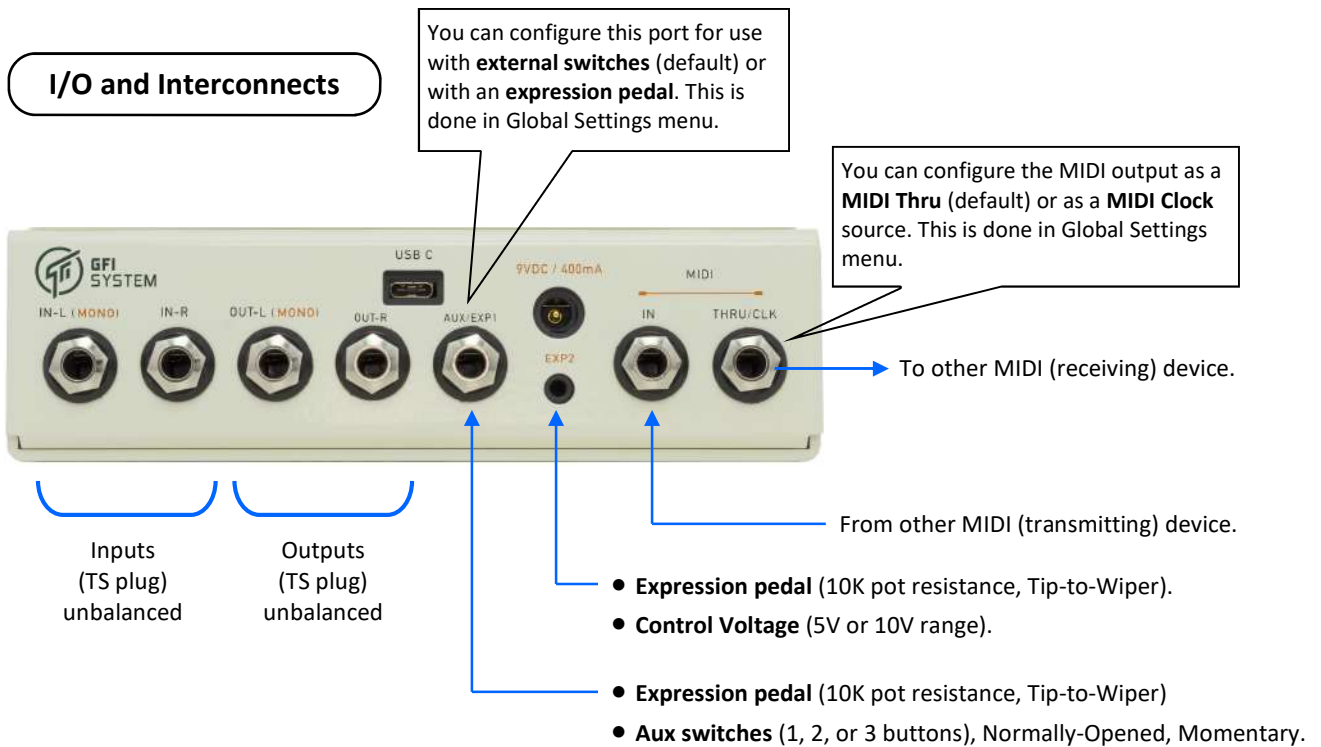


In **Preset Mode** these buttons are used to call Patch A or Patch B.

In **StompBox Mode** these buttons are used for individual control of DSP-Y and DSP-X.

You can configure this button for **Patch C** call or for **Tap Tempo**. This is done in the Global Settings menu.

I/O and Interconnects



**Display and LED Indicators**



**Dynamics LED indicator** lights up when Dynamics X and(or) Dynamics Y are active.

**Crossover LED indicator** lights up when Crossover is active.



In both **Preset Mode** and **Stompbox Mode**, this LED indicator is on at all times, and the color is **GREEN**, this serves as a constant reminder that footswitch C/Tap is working as a Tap Tempo switch.

Footswitch C/Tap is configured for Tap Tempo



In **Preset Mode** (default), these LED indicators turn on when the respective patch is active, and the color is **ORANGE**.

In **Preset Mode** (default), this LED indicator turn on when the patch C is active, and the color is **ORANGE**.

Footswitch C/Tap is configured for Patch C.

In **Stompbox Mode**, these LED indicators turn on when the respective DSP engine is active, and the color is **RED**.

In **Stompbox Mode**, this LED indicator will be off at all times.

**Knobs and Sliders**

**ALGO Selector knob** - Scroll through the algorithm list.



The algorithm selector knob is also a button:

- Tap the button to [toggle between Delay and Reverb](#).
- (DSP X algo selector): **Hold** for 2 seconds to enter the [Options menu](#).
- (DSP Y algo selector): **Hold** for 2 seconds to enter the [Global Setting menu](#).
- (DSP X + DSP Y): **Hold both** buttons for 2 seconds to enter the [Preset Save menu](#).
- (DSP X + DSP Y): **Tap both** buttons simultaneously to [swap the X and Y algorithms](#).

**TIME knob** - Set the Delay Time (for Delay algorithm), or the Predelay parameter (for reverb algorithm).



The TIME knob is also a button:

- Tap the knob's button to enter the [Time Options menu](#).
- Twist (hold and turn) to [set the Time in 1 millisecond \(or 1 BPM\) step](#).

**MIX knob** - Turn the knob to set the **Wet signal level** or the **Dry signal level**.



The Dry signal level can be adjusted independently of the Wet signal level, this gives you very fine control over the Wet/Dry mix.

The MIX knob is also a button:

- Tap the button to [toggle between Wet Level control and Dry Level control](#).
- (DSP X): **Hold** for 2 seconds to [toggle DSP X on and off](#).
- (DSP Y): **Hold** for 2 seconds to [toggle DSP Y on and off](#).

**PARAM knob**



Each algorithm has 8 unique parameters. These parameters are controlled using a single knob, the PARAM knob.

The PARAM knob is also a button:

- Use the combination of knob turns and button presses to navigate the menu and adjust the parameter values.

## Options

The Options menu gives you a variety of settings that are saved on per-preset basis. These include:

- XY Routing
- Volume Trim
- Bypass Trails
- Spillover
- DSP-X Trails
- DSP-Y Trails
- PC Call State.
- Preset Titles.
- Expression setups.

To enter the Options menu: **HOLD for 2 secs**



☞ Once you're inside the menu, you can exit it without saving any changes by holding the same button again for 2 seconds.

## Global Settings

The Global Settings menu gives you a collection of settings that are saved on a global scope, i.e. they don't change from preset to preset. These include:

- Preset Bank
- Switch C/Tap
- Operational Mode
- Bypass Mode
- Dry Signal
- Sum-to-Mono
- Power-up State
- Power-up Preset
- LCD Brightness
- MIDI Channel
- MIDI Out Function
- MIDI Out pins
- Aux/Exp1 Input
- Exp2 Input
- CV Voltage Range
- Favorite Preset
- Looper Position
- Looper Exit
- Looper Volume
- Aux Tip
- Aux Ring
- Aux Tip + Ring

To enter the Globals menu: **HOLD for 2 secs**



☞ Once you're inside the menu, you can exit it without saving any changes by holding the same button again for 2 seconds.

### Time Options

The Time Options menu brings up a set of options related to time (tempo), these include:

- Tempo Mode : **Free** or **Global/Synced**.
- Tempo Display : **millisecond** or **BPM**
- Tempo Subdivisions
- Tempo Change : **Instant** or **Warped**

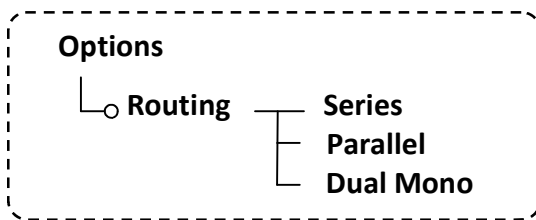
To enter DSP-Y Options menu:

To enter DSP-X Options menu:

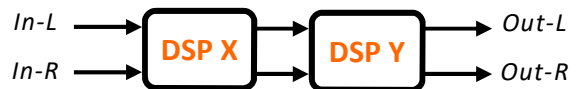


Once you're inside the menu, you can exit it without saving any changes by holding the same button again for 2 seconds.

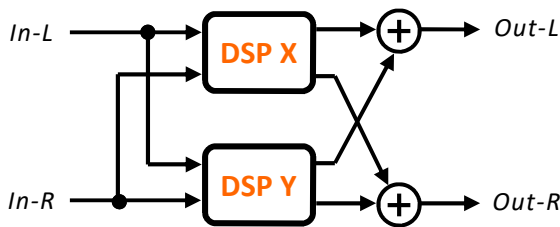
### Routing Configurations



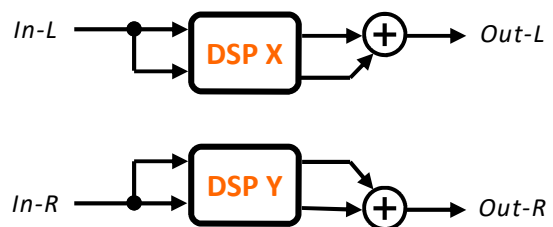
#### SERIES



#### PARALLEL



#### DUAL MONO



### XY Swap Function

X and Y can be quickly swapped at a touch of two buttons. This is a powerful tool that allows you, for example, to audition how an Analog delay into a Shimmer reverb sounds as opposed to a Shimmer reverb into an Analog delay.



## Preset System

Up to 96 presets can be saved and recalled using the onboard footswitches, an external switchbox, or MIDI. The presets are arranged organized into 32 banks, where each banks contains 3 patches: Patch A, Patch B, and Patch C. The pedal ships with the first 32 preset locations programmed with factory presets. Users can overwrite these with their own presets if so they wish. The remaining preset locations are not pre-programmed with anything meaningful, and may be regarded as 'empty presets'.

### ◆ Saving a preset

1. Press and hold ALGO X knob and ALGO Y knob together, release when the preset save menu is displayed on the screen.
2. Turn the ALGO X knob or ALGO Y knob to choose the desired preset bank, then push footswitch
  - A/Y to save to patch A in the selected bank.
  - B/X to save to patch B in the selected bank.
  - C/TAP to save to patch C in the selected bank.

This one is only applicable if footswitch C has not been configured for Tap Tempo.



After saving the preset, you can edit the preset title from the Options menu:

#### Options

└─ Preset Title editor

### ◆ Copying a preset to another location

1. Call the preset that you want to copy to another location.
2. Execute the save preset procedure described above, remember to choose the desired destination location first before committing the save!

### ◆ Scrolling through the preset banks

To scroll up: short press footswitch B/X and footswitch C/TAP together.  
To scroll down: short press footswitch A/Y and footswitch B/X together.

**Tips:** execute the double-switch presses described above at least once, then you can use the ALGO X knob or ALGO Y knob for faster scrolling.

### ◆ Putting constraints to the accessible preset banks

Sometimes you only need to use a few banks of presets, and would love to be able to navigate through them without having to tip toe around the other unused ones. You can achieve this by restricting the accessible preset location to only a few consecutive banks. This is done in Global Settings menu:

#### Globals

└─ Preset Banks —  
[Bank 2 to Bank 32]

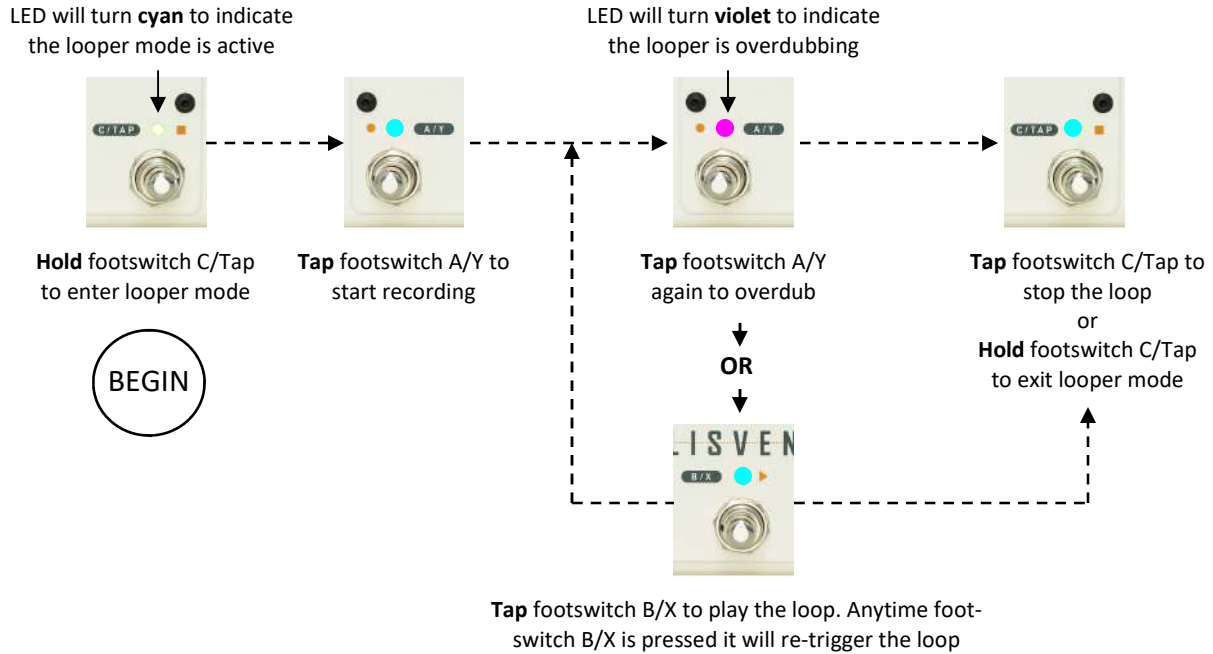
For example, if you choose 'Bank 4', then the bank-change cycle is like this:



This self-imposed restriction will not be applied when a preset is called via MIDI. PC messages will always be able to call any preset number.

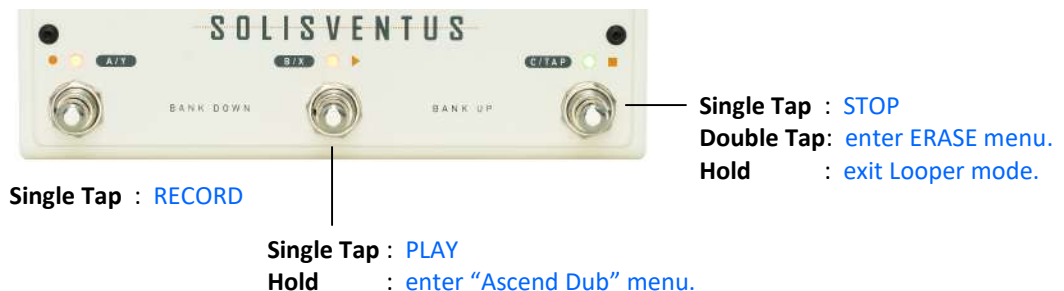
## Looper

A 40 second stereo looper is available that works independently from the Delay and Reverb engines.



- ☞ Once a loop track is recorded, each time you press the REC button (footswitch A/Y) a new layer will be overdubbed on top of the track. You can do this as many time as you like.
- ☞ If you'd like to start afresh the existing loop track must first be erased (double tap the STOP button).
- ☞ The loop can be kept playing in the background if desired. Normally the loop will stop playing when exiting the looper mode. To keep playing the loop when exiting looper set the Looper Exit to PLAY in the global settings menu.
- ☞ Looper can be placed *before* (Pre) or *after* (Post) the delay and reverb engines. This configuration is set in Global settings menu.

When in Looper mode, the footswitches operate as follows:





## Looper Effects

A number of playback effects such as Double Speed and Reverse can be added on the fly.

To enter Looper Effects menu: Tap the button (either one) twice



- Turn to select ON or OFF.
- Tap to confirm selection and exit the menu.

- Turn to select ON or OFF.
- Tap to confirm selection and exit the menu.

## Ascend Dub

This is a special mode where loops are played and overdubbed in 2X speed, resulting in an ever increasing pitch transposition. Using this mode will usually result in a surprising sequences of sound, one that you may not expect, but most of the time is pleasing and even hypnotic. There is an element of unpredictability that hits you like a freight train, but it's a collision that takes things into interesting and uncharted waters! If you just want a standard looper, stay away from the Ascend Dub, but if you are into experimentation jump in and have some fun.

Here's a typical sequence:

1. Record a loop track - **press REC.**
2. Play the loop - **press PLAY.**
3. Enter Ascend Dub menu - **Hold PLAY button for 2 seconds.**
  - > activate the Ascend Dub mode.

You will immediately hear the loop is now playing at 2x speed.
4. Overdub a new layer of sound.
5. Activate REVERSE effect if you wish.
6. Overdub some more layers if you wish.

**Looper Limitation** - the looper in the Solis Ventus has one limitation:

“Changing preset will stop looper playback and existing loop track will be erased”.

This limitation may be removed with future updates. But we are not making any promises at this time.